

TAMIL NADU
SLUM CLEARANCE BOARD

PROPOSAL FOR RECONSTRUCTION OF (G+3 FLOORS) TENEMENTS AT KOTTURPURAM PHASE-II, IN S.NO.1/C pt, BLOCK NO.14, ADAYAR VILLAGE, MAMBALAM - GUINDY TALUK, CORPORATION Dn.No.172, ZONE : 13 AND CHENNAI DISTRICT.

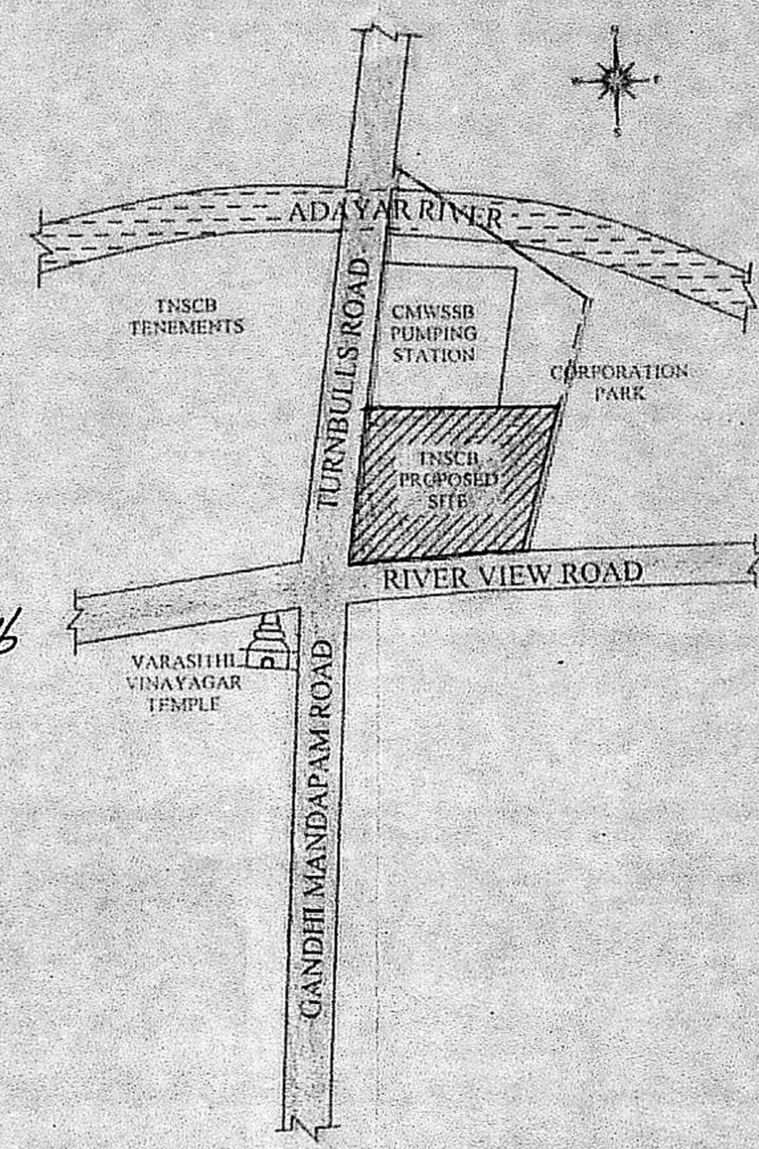
REFERENCE:

AS PER TYPE DESIGN NO. PLINTH AREA/UNIT [16 UNITS/BLOCK] NO. OF TENEMENTS AS PER TYPE DESIGN NO. PLINTH AREA/UNIT [16 UNITS/BLOCK] NO. OF TENEMENTS TOTAL NO OF TENEMENTS

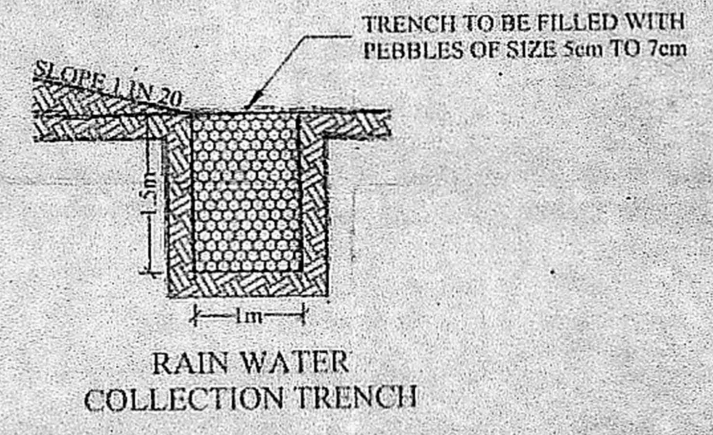
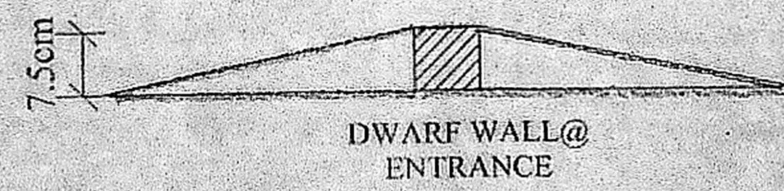
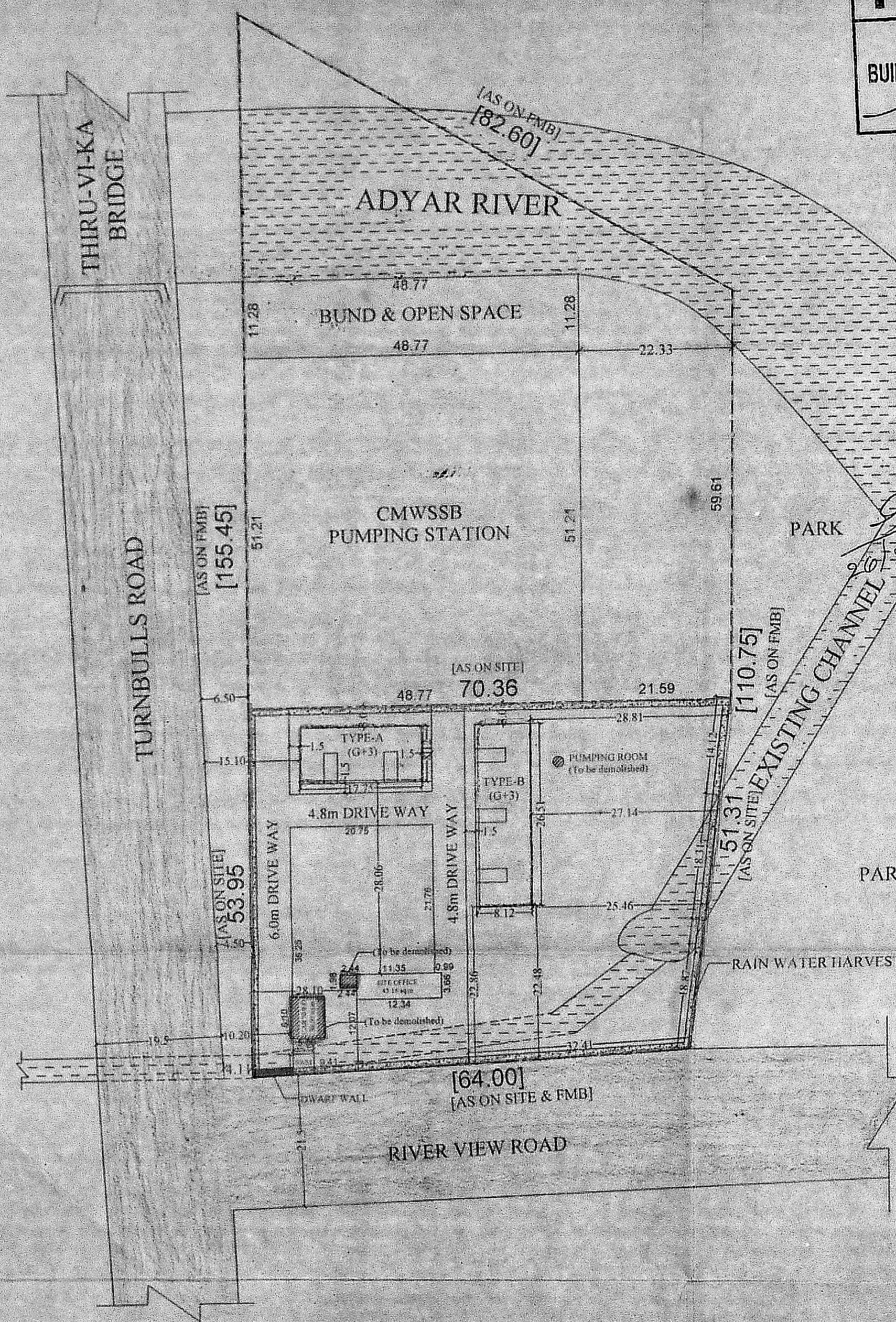
செ.பெ.வ.கு. (பி) எண்	15/2013 (G+3) Type-B
ந. எண்	16
உதவியாளர்	24
கூட்டுதலுக்கு (மீ) sq.m	16
தி. உ.	24
செ.பெ.வ.கு. (பி) எண்	15/2013 (G+3) Type-B
ந. எண்	16
உதவியாளர்	24
கூட்டுதலுக்கு (மீ) sq.m	16
தி. உ.	24

TNSCB COPY
THIS PLAN IS VALID SUBJECT TO A BUILDING LICENCE BEING OBTAINED FROM THE LOCAL BODY CONCERNED.

KEY PLAN
NOT TO SCALE



அலுவலகப் படி
திட்ட வரைபட அனுமதி எண் B/Sp.No. BMDA/45...A/D/2016
ஒப்பளிக்கப்பட்டது இவ்வலுவலகக் கட்டிட எண் B/Sp.No. BMDA/45...A/D/2016 நாள் 26/12/16ல் குறிப்பிடப்பட்டுள்ள வரையறைகளுக்கு உட்பட்டது.
உறுப்பினர் செயல்துறைகளுக்கான சென்னைப் பெருநகர் வளர்ச்சிக் குழுமம், சென்னை 600 008.



FLOOR WISE AREA STATEMENT:

DESCRIPTION	TYPE-A BLOCK	TYPE-B BLOCK	EXISTING SITE OFFICE
GROUND FLOOR	144.13	215.26	45.16
FIRST FLOOR	144.13	215.26	---
SECOND FLOOR	144.13	215.26	---
THIRD FLOOR	144.13	215.26	---
TOTAL	576.52	861.04	45.16

TOTAL FSI AREA (576.52+861.04+45.16)= 1482.72sq.m

AREA STATEMENT:

PLOT EXTENT (as per document)	- 9141.58 sq.m
PLOT EXTENT (as per site)	- 9141.58 sq.m
PROPOSED SCHEME EXTENT	- 3515.00 sq.m
DENSITY	- 114 units/Hect.
FLOOR SPACE INDEX (FSI)	- 0.42
PLOT COVERAGE	- 10.54 %

LEGEND

- BOUNDARY
- PROPOSED
- EXISTING
- ROAD
- DEMOLITION

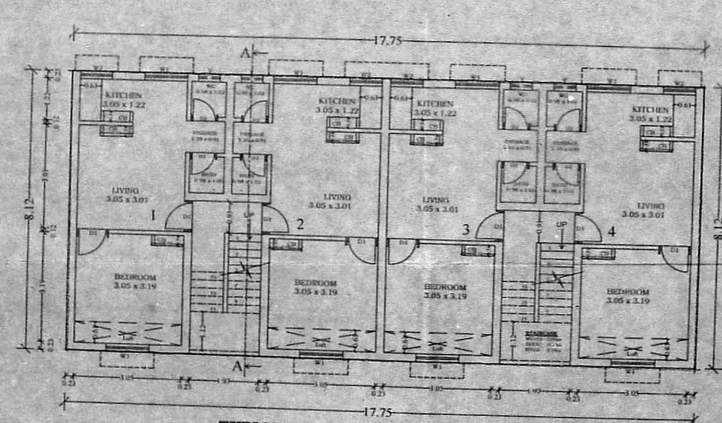
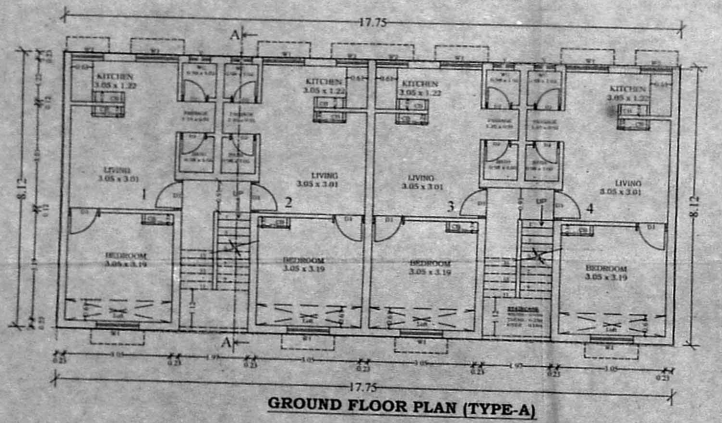
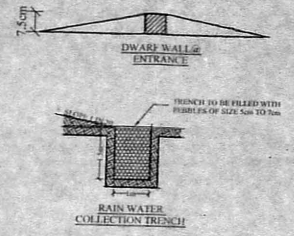
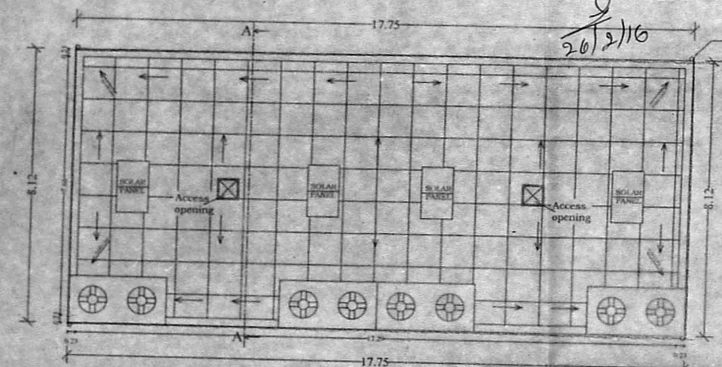
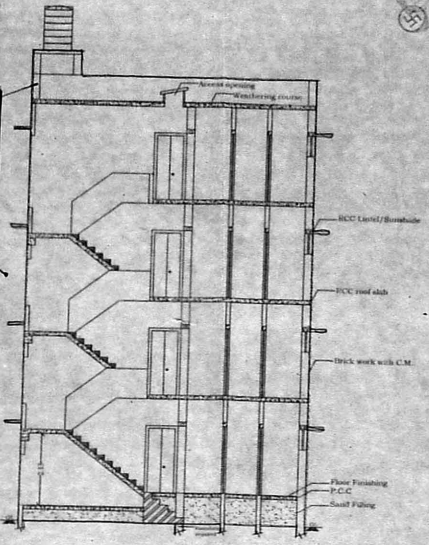
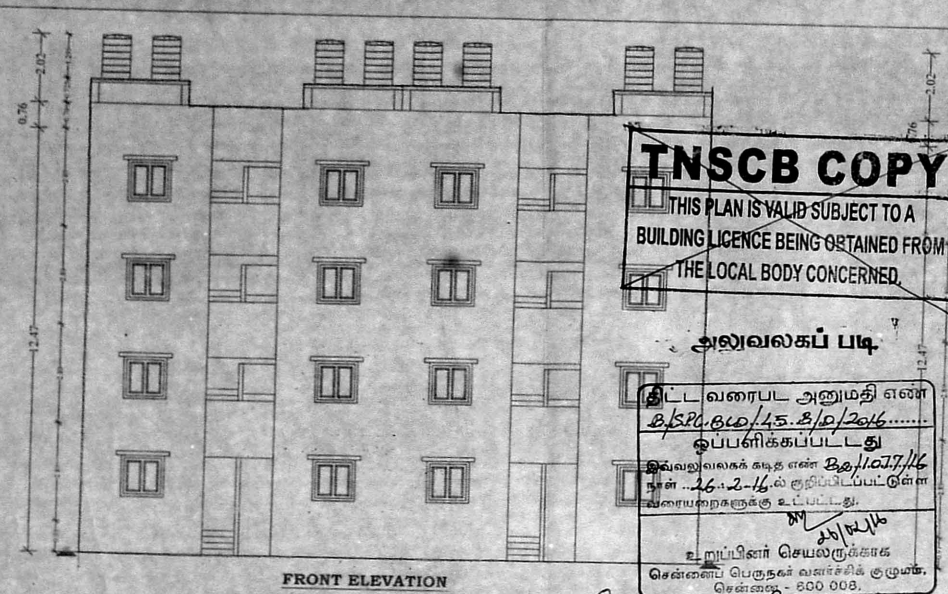
NO	DATE	REVISION	PROP	CHKD	DEALT	APPD.
3	16-02-2016	CMDA L.No B2/ 1077 /16, dt 11.02.2016	P.L	G.M	U.M	P.E
2	20-01-2016	Resubmission of proposal	P.L	G.M	U.M	P.E
1	06-06-2014	5 Staircase split into 2 & 3 stair cases.	P.L	G.M	U.M	P.E

NOTE:

ALL DIMENSIONS ARE IN METER.

SCALE	PROJECT	KOTTURPURAM PHASE-II
1 : 400	DWG. TITLE	SITE PLAN
SIZE	DWG. NO.	TNSCB/DP/KP-PH.II/LAYOUT
A2	REV	01

PLANNING ASST.	ASST. PLANNER
DEPUTY PLANNER	CHIEF ENGINEER



TAMIL NADU SHEET NO.2/4
 SLUM CLEARANCE BOARD

T.D. NO. 05 / 2013 [TYPE-A]
 (G + 3 FLOORS - 4 UNITS / FLOOR)
 [16 UNITS / BLOCK]

PROPOSAL FOR RE-CONSTRUCTION OF (G+3 FLOORS) TENEMENTS AT KOTTURPURAM PHASE-II, IN S.NO.1/C pt, BLOCK NO.14 OF ADYAR VILLAGE, MAMBALAM-GUINDY TALUK, CORPORATION DIVISION NO.172, ZONE-13 AND CHENNAI.

AREA DETAILS:

PLINTH AREA / UNIT (INCLUDING COMMON AREA)	- 36.03 sq.m
COMMON AREA / UNIT	- 4.38 sq.m
PLINTH AREA / UNIT EXCLUDING COMMON AREA	- 31.65 sq.m
CARPET AREA / UNIT	- 26.25 sq.m

SCHEDULE OF JOINERIES

TYPE	DESCRIPTION	SIZE
D1	DOOR	0.90 x 2.00
D2	DOOR	0.76 x 2.00
W1	WINDOW	1.22 x 1.22
W2	WINDOW	0.91 x 1.22
W3	WINDOW	0.90 x 0.90
V	VENTILATOR	0.61 x 0.61

NO	DATE	REVISION	PROJ.	CHD.	DEALT.	APPD.
1	16.02.2016	C/MDA Lr.No.112/1077/16, dated.11.02.16	P.L	G.M	U.M	P.E

RELEASED ON DATED

NOTE:
 1. ALL DIMENSIONS ARE IN METER.
 2. THE TYPE DESIGN TO BE ADOPTED FOR KOTTURPURAM SCHEME.

SCALE	PROJECT	KOTTURPURAM -PH-II
1 : 100	DWG.TITLE	TYPE DESIGN
A2	DWG. NO.	TNSCB/DP/KP-PH-II/T.D
	FILE LOC.	D-LAYOUTS-KOTTURPURAM
	DRAWN BY :	P.LAKSHMI
	CHECK BY :	G.MANIMEKALAI

PLANNING ASST.	ASST. PLANNER
DEPUTY PLANNER	CHIEF ENGINEER

TAMIL NADU
SLUM CLEARANCE BOARD

T.D. NO. 05 / 2013 [TYPE-B]
(G + 3 FLOORS - 4 UNITS / FLOOR)
[24 UNITS / BLOCK]

PROPOSAL FOR RE-CONSTRUCTION OF (G+3 FLOORS) TENEMENTS AT KOTTURPURAM PHASE-II, IN S.NO.1/C pt, BLOCK NO.14 OF ADYAR VILLAGE, MAMBALAM-GUINDY TALUK, CORPORATION DIVISION NO.172, ZONE-13 AND CHENNAI.

AREA DETAILS:

PLINTH AREA / UNIT (INCLUDING COMMON AREA)	- 35.87 sq.m
COMMON AREA / UNIT	- 4.38 sq.m
PLINTH AREA / UNIT EXCLUDING COMMON AREA)	- 31.49 sq.m
CARPET AREA / UNIT	- 26.25 sq.m

SCHEDULE OF JOINERIES

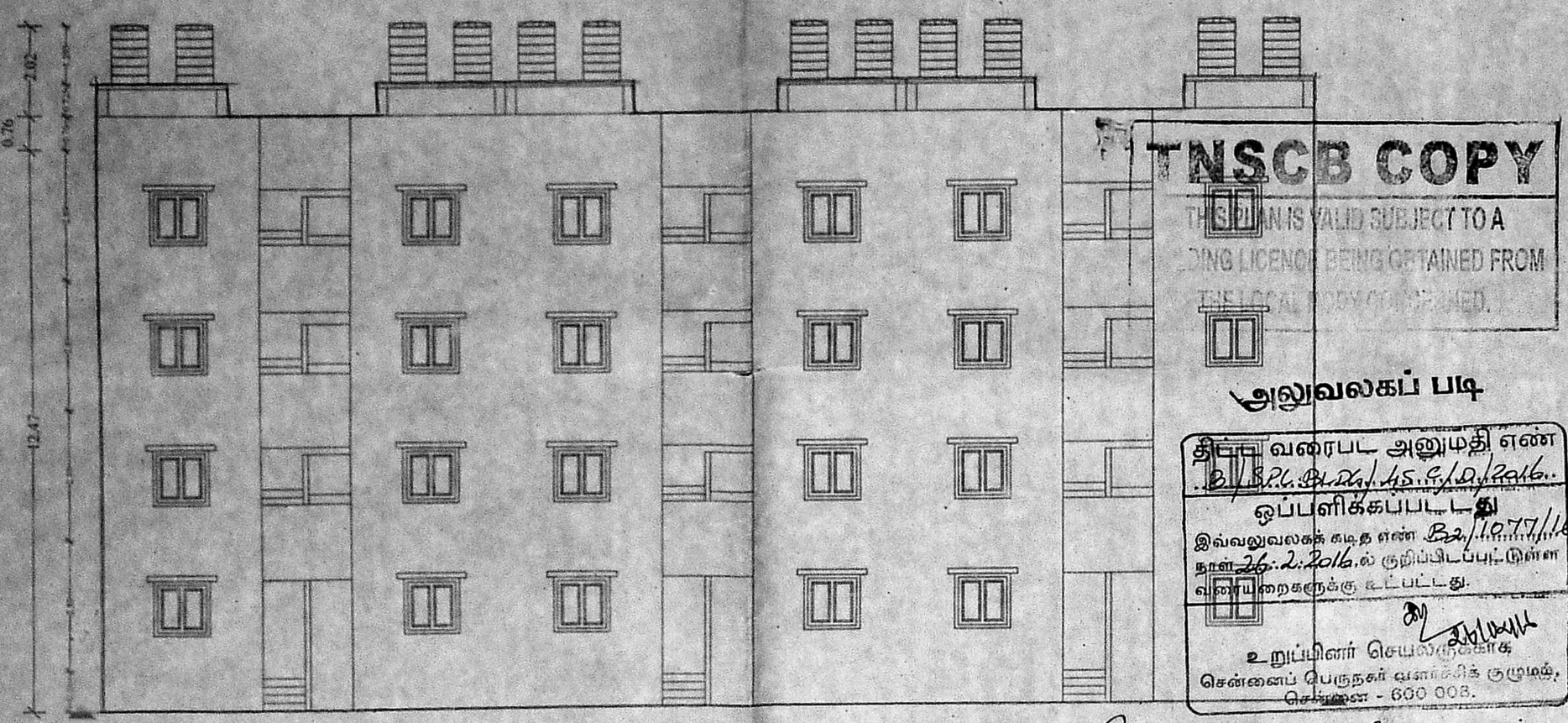
TYPE	DESCRIPTION	SIZE
D1	DOOR	0.90 x 2.00
D2	DOOR	0.76 x 2.00
W1	WINDOW	1.22 x 1.22
W2	WINDOW	0.91 x 1.22
W3	WINDOW	0.90 x 0.90
V	VENTILATOR	0.61 x 0.61

NO	DATE	REVISION	PROP.	CHKD.	DEALT.	APPD.
1	16.02.2016	CMDA Lr.No.B2/1077/16, dated.11.02.16	P.L	G.M	U.M	P.E
RELEASED			ON DATED			

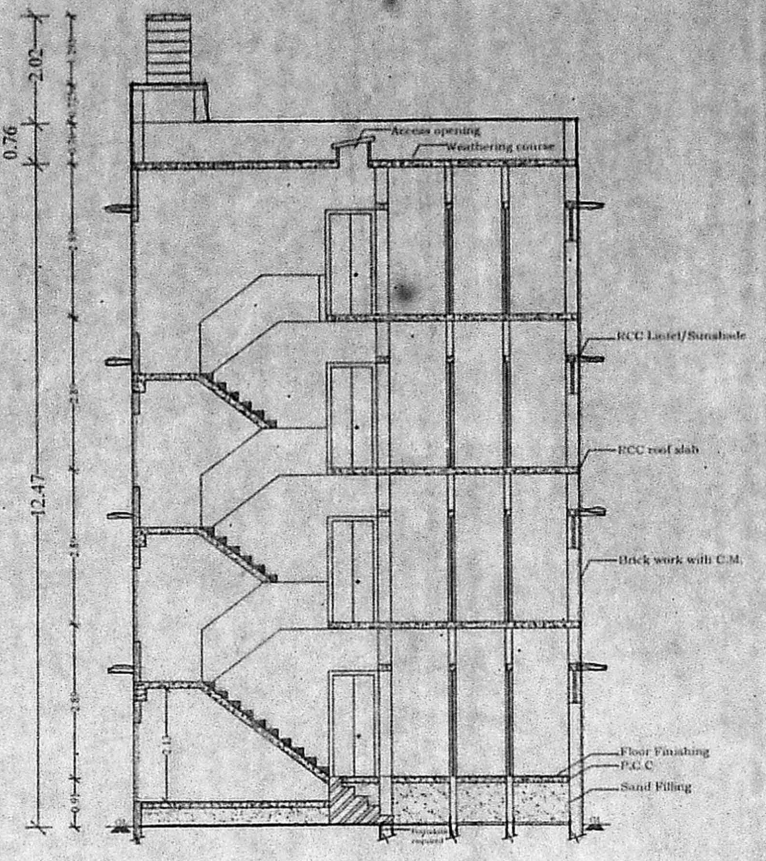
NOTE:
1. ALL DIMENSIONS ARE IN METER.
2. THE TYPE DESIGN TO BE ADOPTED FOR KOTTURPURAM SCHEME.

SCALE	PROJECT	KOTTURPURAM -PH-II
1 : 100	DWG.TITLE	TYPE DESIGN
SIZE	A1	
DWG. NO.	TNSCB/DP/KP.PH-II/T.D	REV.00
FILE LOC.	D-LAYOUTS-KOTTURPURAM	
DRAWN BY :	P.LAKSHMI	CHKD BY : G.MANIMEKALAI

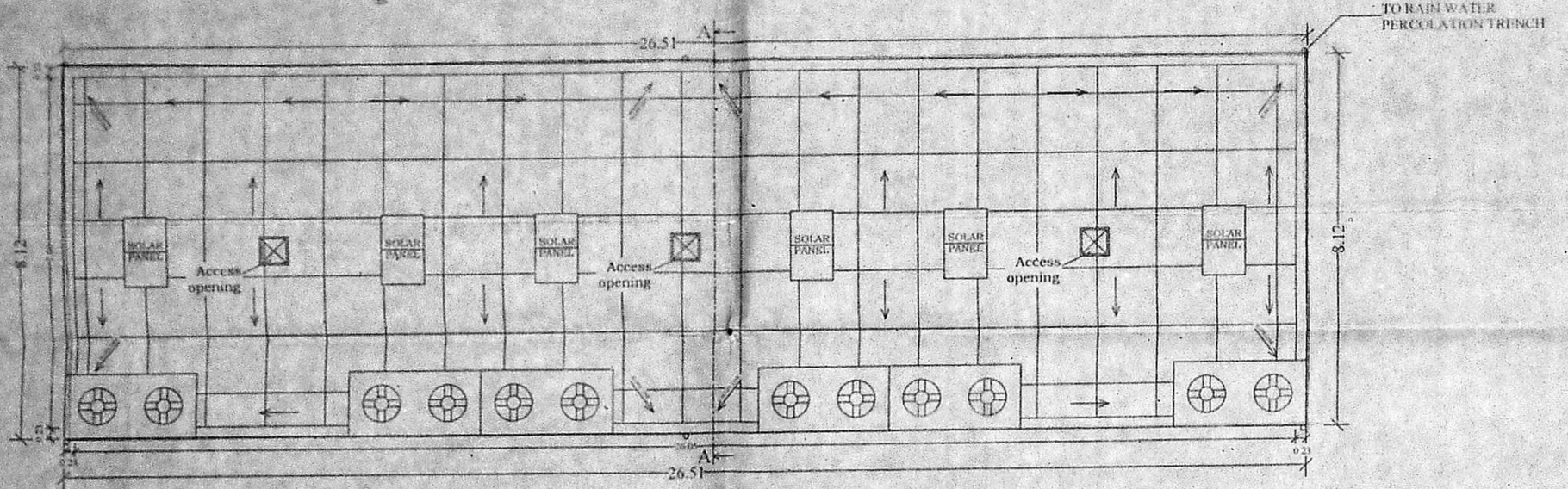
PLANNING ASST.	ASST. PLANNER
DEPUTY PLANNER	CHIEF ENGINEER



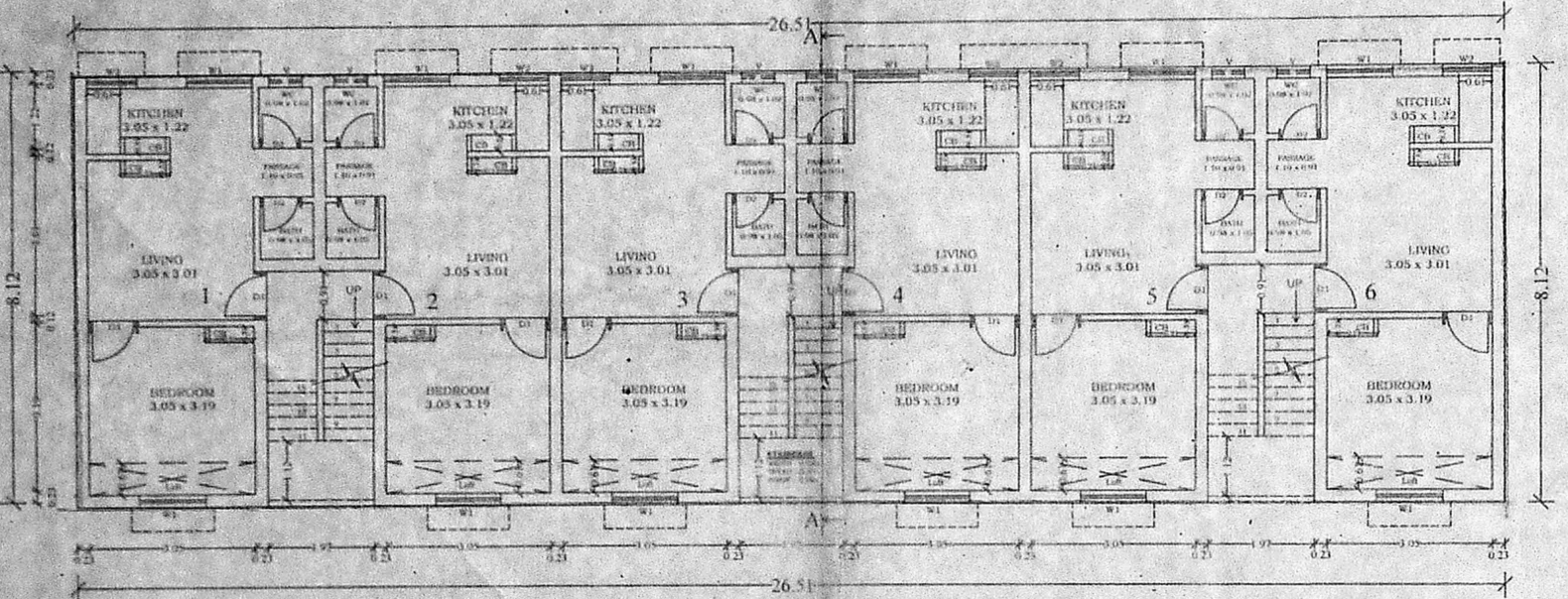
FRONT ELEVATION



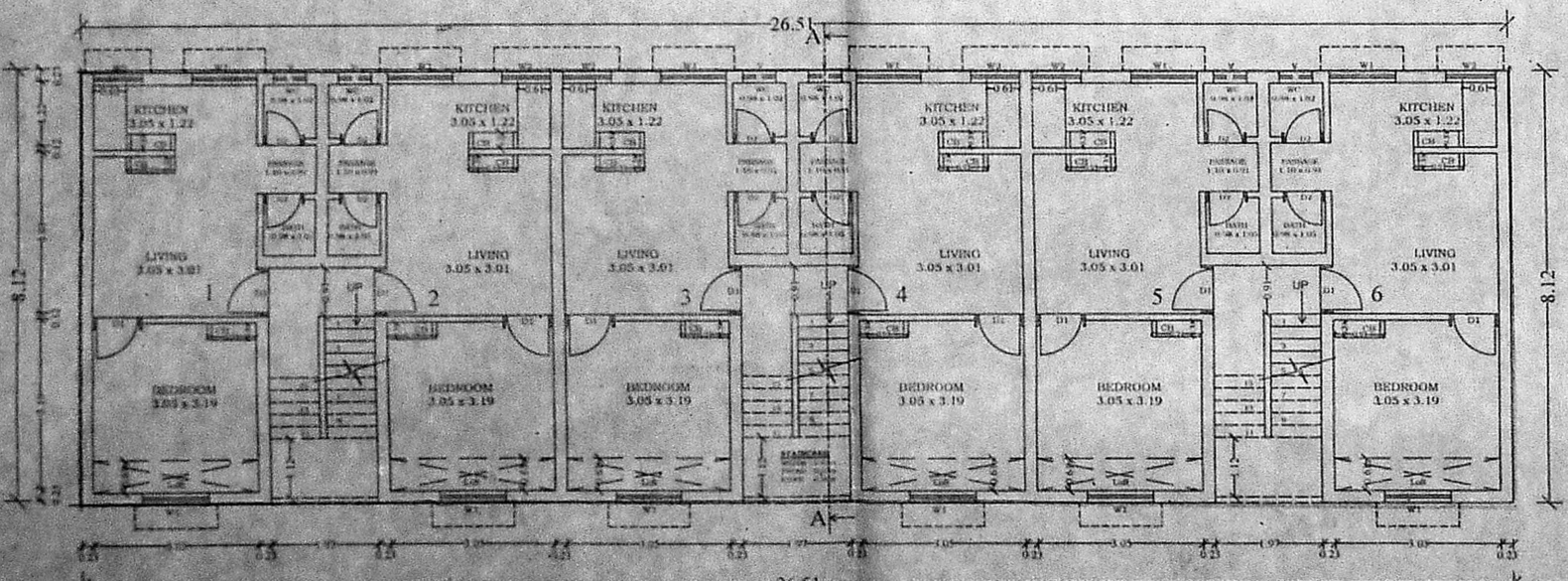
SECTION A-A



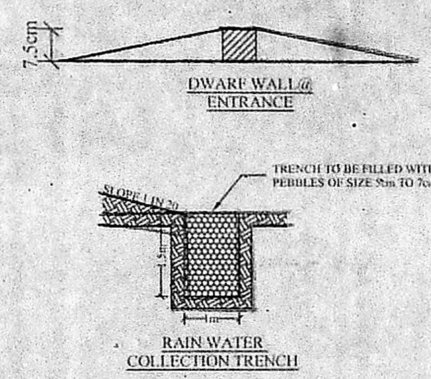
TERRACE FLOOR PLAN (TYPE-B)



TYPICAL FLOOR PLAN (I, II & III) (TYPE-B)



GROUND FLOOR PLAN (TYPE-B)



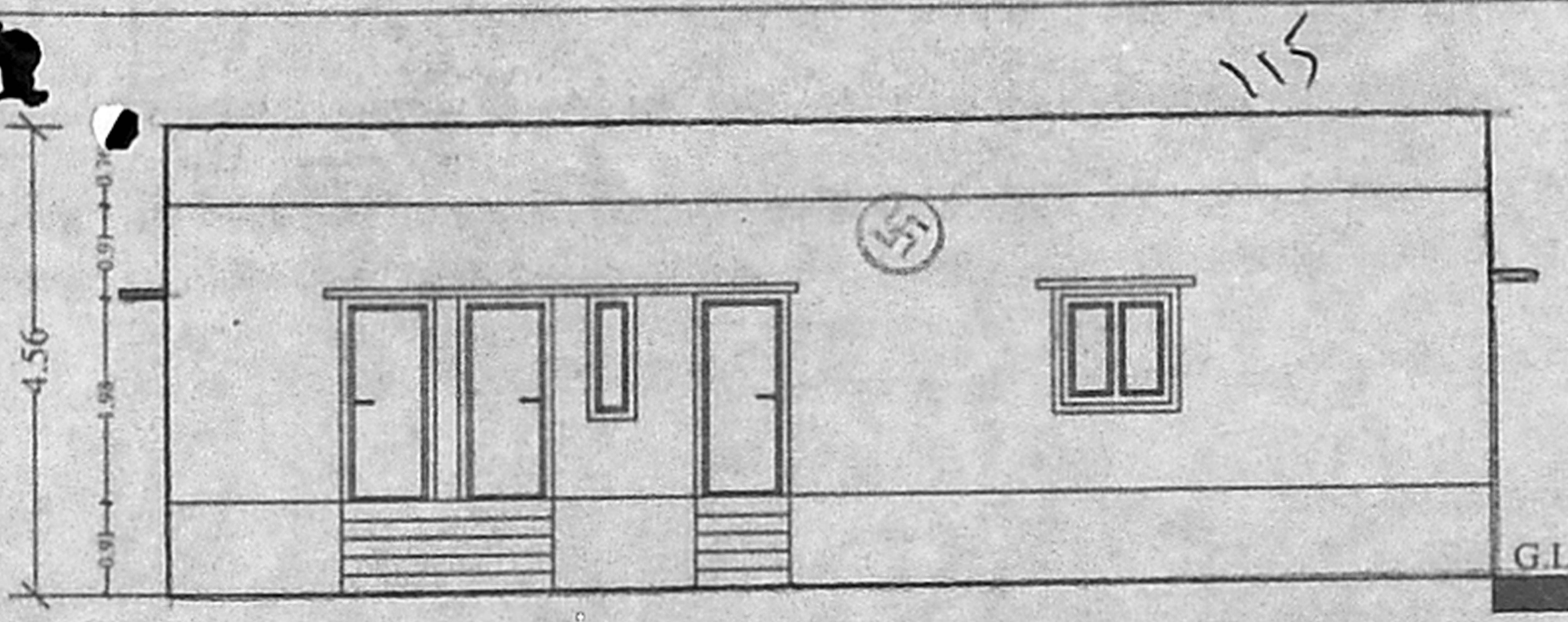
TAMIL NADU
SLUM CLEARANCE BOARD

DETAILED PLAN FOR EXISTING STRUCTURE OF SITE OFFICE LOCATED INSIDE THE KOTTURPURAM PHASE-II SCHEME, IN S.No 1/C pt, BLOCK NO.14 OF ADYAR VILLAGE, MAMBALAM-GUINDY TALUK, CORPORATION DN. NO 172, ZONE:13, CHENNAI.

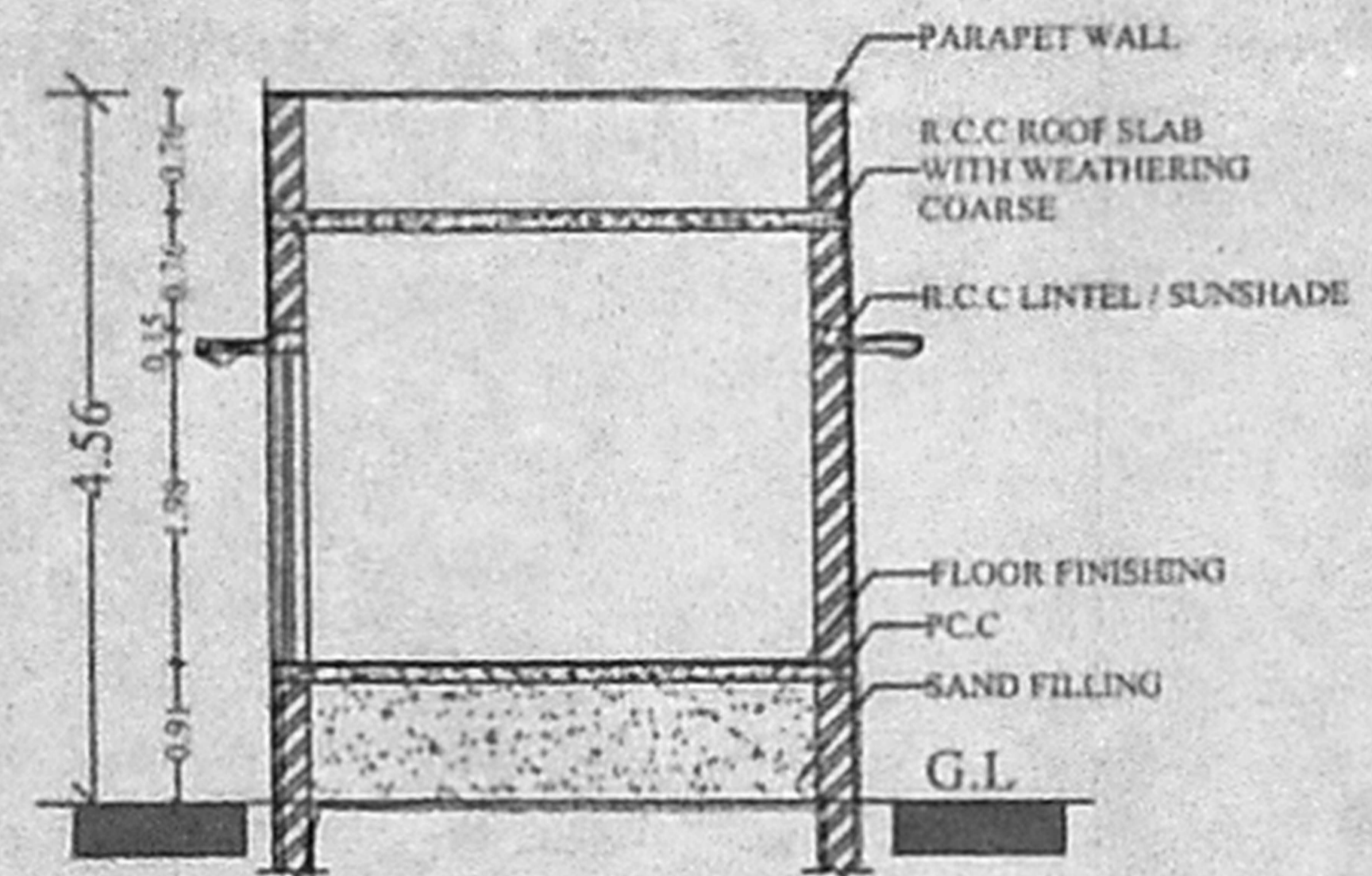
AREA DETAILS
PLINTH AREA 45.16 sq.m

SCHEDULE OF JOINERIES

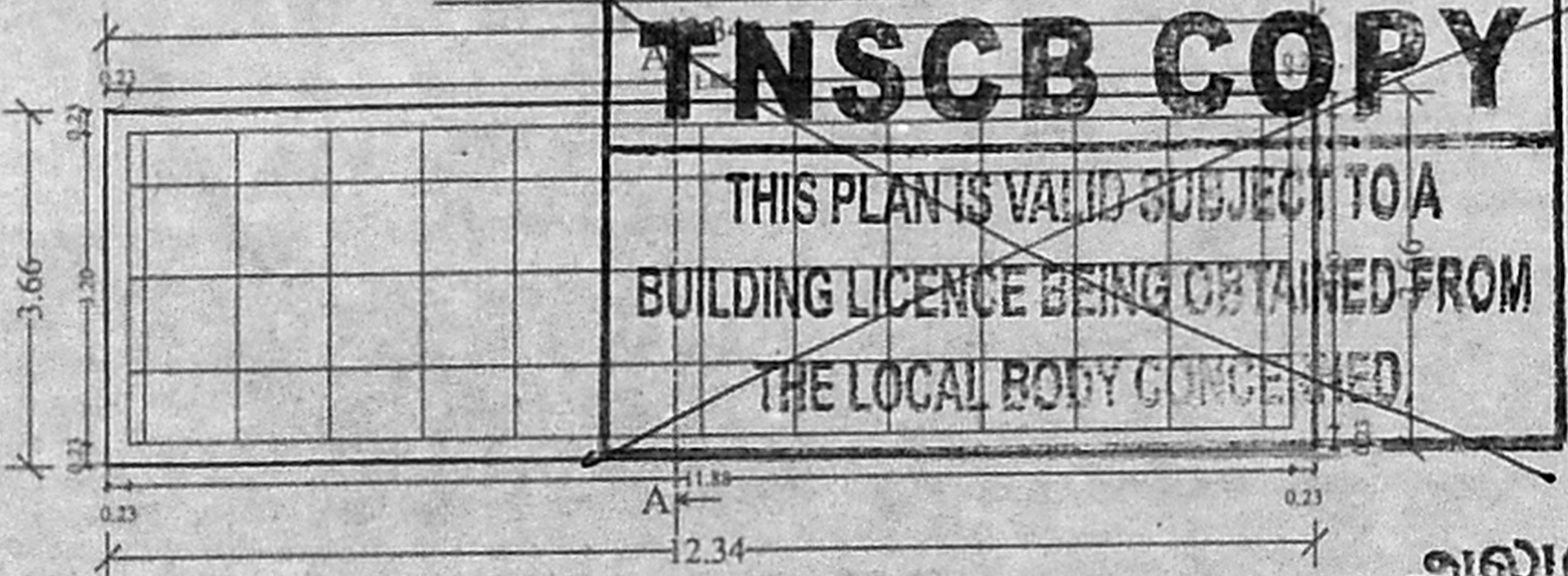
TYPE	DESCRIPTION	SIZE
D1	DOOR	0.91 x 1.98m
W1	WINDOW	1.22 x 1.22m
W2	WINDOW	0.91 x 1.22m
W3	WINDOW	1.22 x 1.22m
RS	ROLLING SHUTTER	1.22 x 1.22m
V	VENTILATOR	0.91 x 0.61m



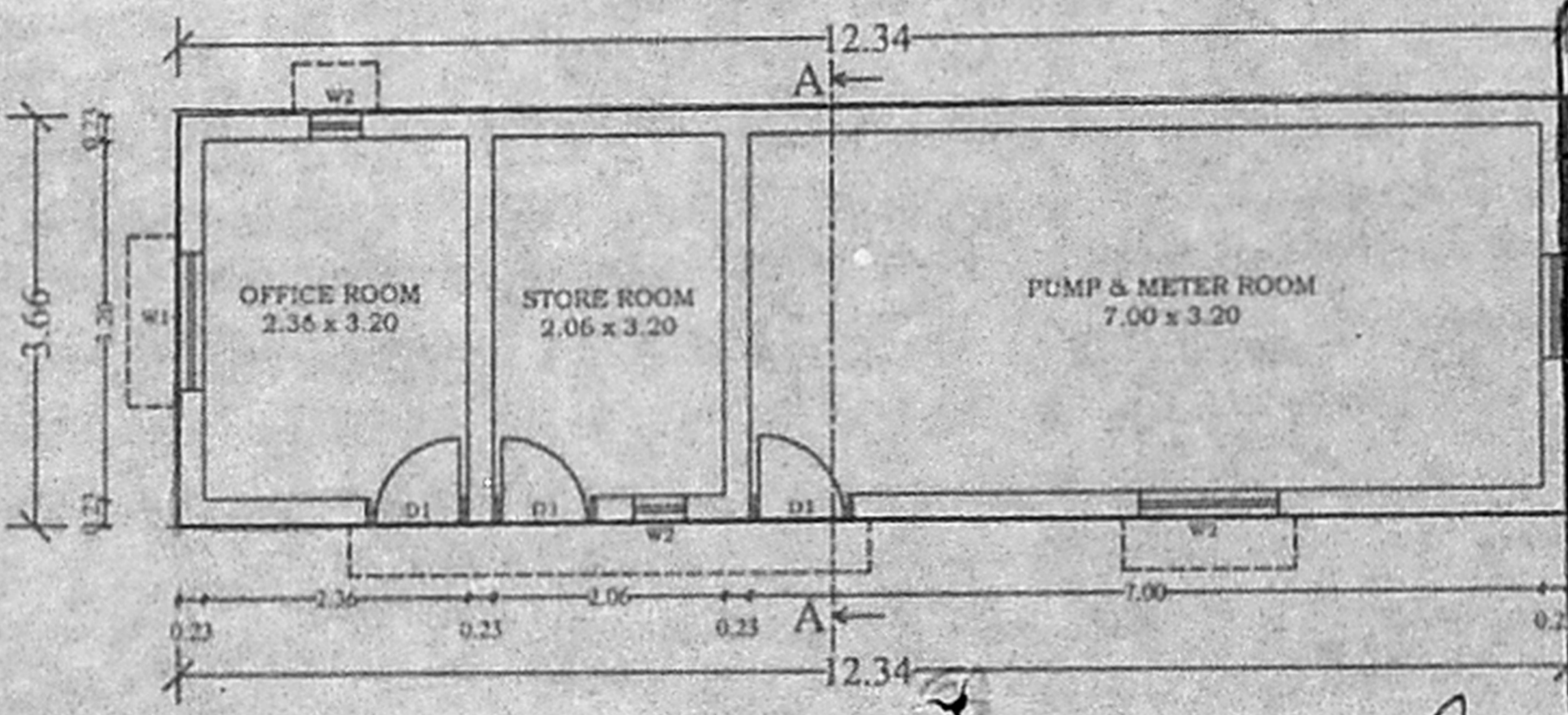
FRONT ELEVATION



SECTION ON A-A



TERRACE FLOOR PLAN



GROUND FLOOR PLAN

செ.பெ.வ.கு. (பி) எண்
 ந. எண் 82/1077/16
 உதவியாளர்
 கூர்ந்தாய்வு
 தி. உ.
 உ.தி.அ.

திட்ட வரைபட அனுமதி எண்
 82/SP.பய.ப.க.ச.ப./D/2016...
 ஒப்பளிக்கப்பட்டது
 இவ்வலுவலகக் கட்டிட எண் 82/1077/16.
 நாள் 26.2.2016 ல் குறிப்பிடப்பட்டுள்ள
 வரையறைகளுக்கு உட்பட்டது.
 உறுப்பினர் செயலாக்காக
 சென்னைப் பெருநகர் வளர்ச்சிக் குழுமம்,
 சென்னை - 600 008.

NO	DATE	REVISION	PREPARED BY	CHKD BY

NOTE:
 1. ALL DIMENSIONS ARE IN METER.
 2. THE TYPE DESIGN HAS BEEN ADOPTED FOR EXISTING SITE OFFICE LOCATED AT KOTTURPURAM PHASE-II SCHEME.

SCALE	PROJECT	KOTTURPURAM PHASE-II SITE OFFICE
1 : 100	DWG TITLE	TYPE DESIGN
A4	DWG NO	TNSCB/DP/KP-PH-II/S/OFFICE/T.D./REV.00
	FILE LOC	D-LAYOUTS KOTTURPURAM PH-II
	DRAWN BY	P. LAKSHMI
	CHKD BY	G. MANJESALAI

PLANNING ASST.	ASST. PLANNER
DEPUTY PLANNER	CHIEF ENGINEER

20/2/16
 26/2/16